



FRONT
SWAY BAR
INSTALLATION
INSTRUCTIONS

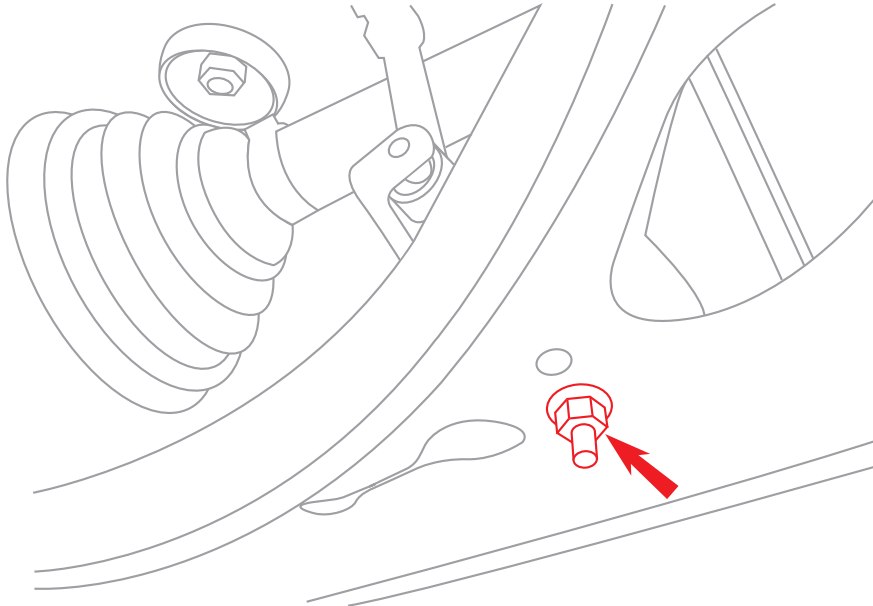
VW
2.0T
GTI
JETTA

AUDI
A3
06-07

Raising Vehicle

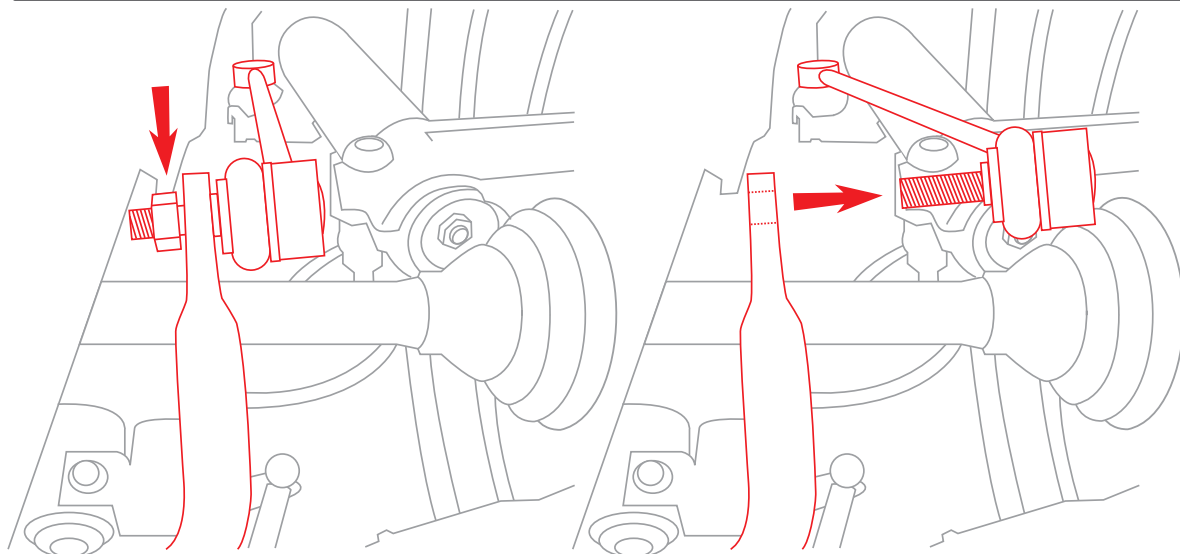
Raise front of the vehicle by using a flat alignment style rack or drive-on ramps. Securely block the rear wheels of the vehicle. Do not remove the front wheels during installation for safety.

1 Detach Ride Height Sensor



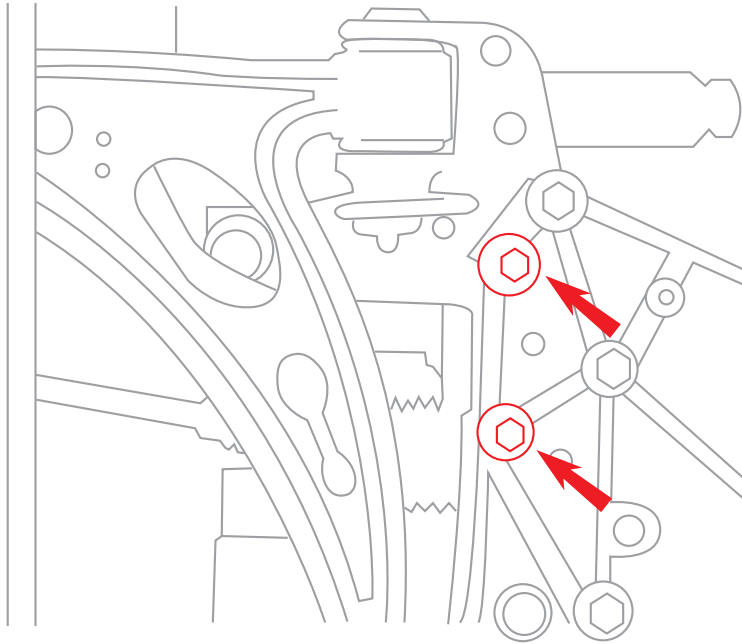
Unbolt the ride height sensor located on the driver side lower control arm.

2 Detach End Links



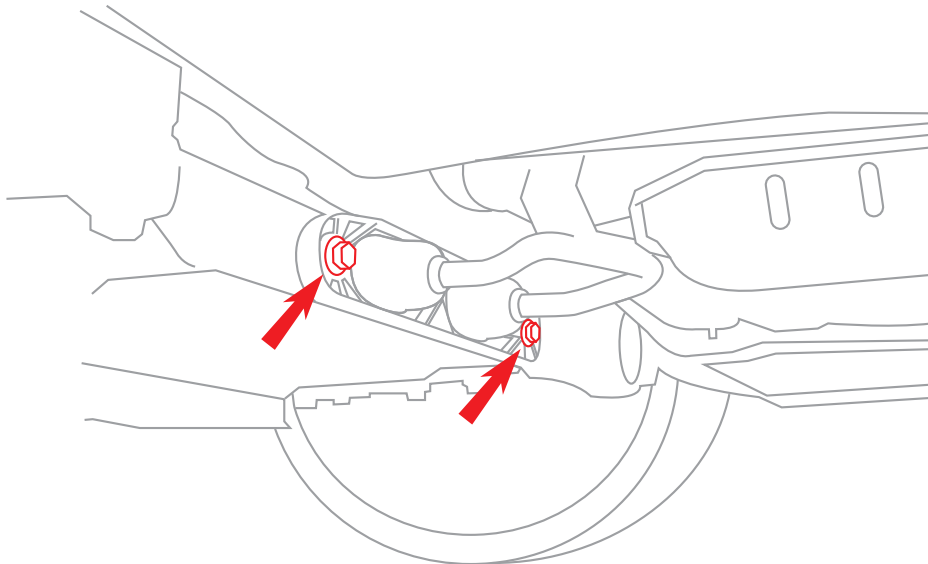
Loosen and remove the lower end link nuts from both sides, and push links aside.

3 **Unbolt Sway Bar Bushing Brackets**



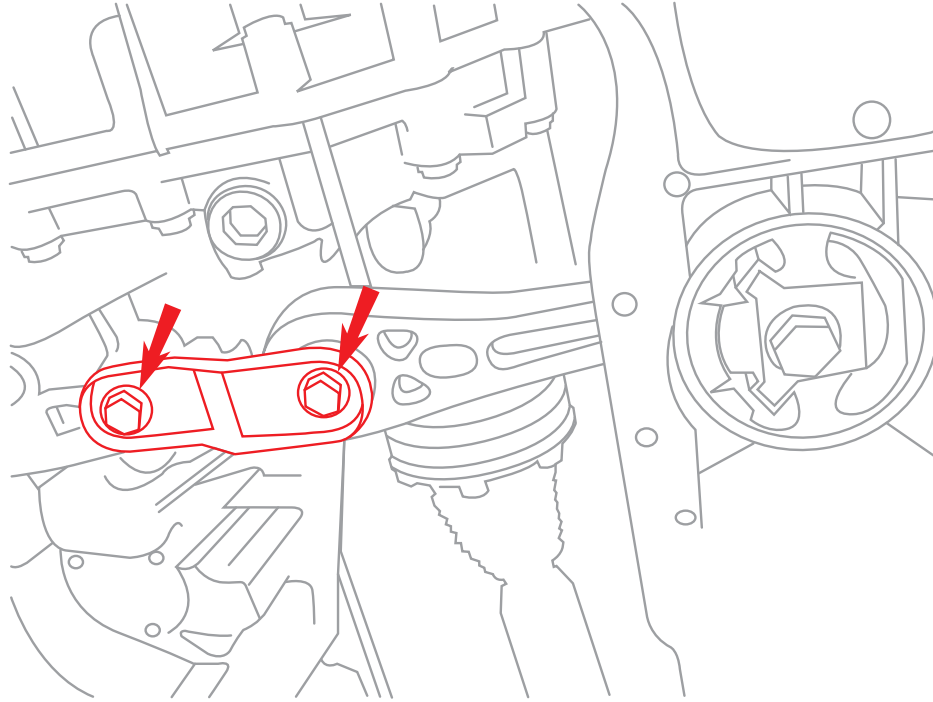
Unbolt the four bolts (two per side) that secure the sway bar to the subframe.

4 **Undo Exhaust Hangers**



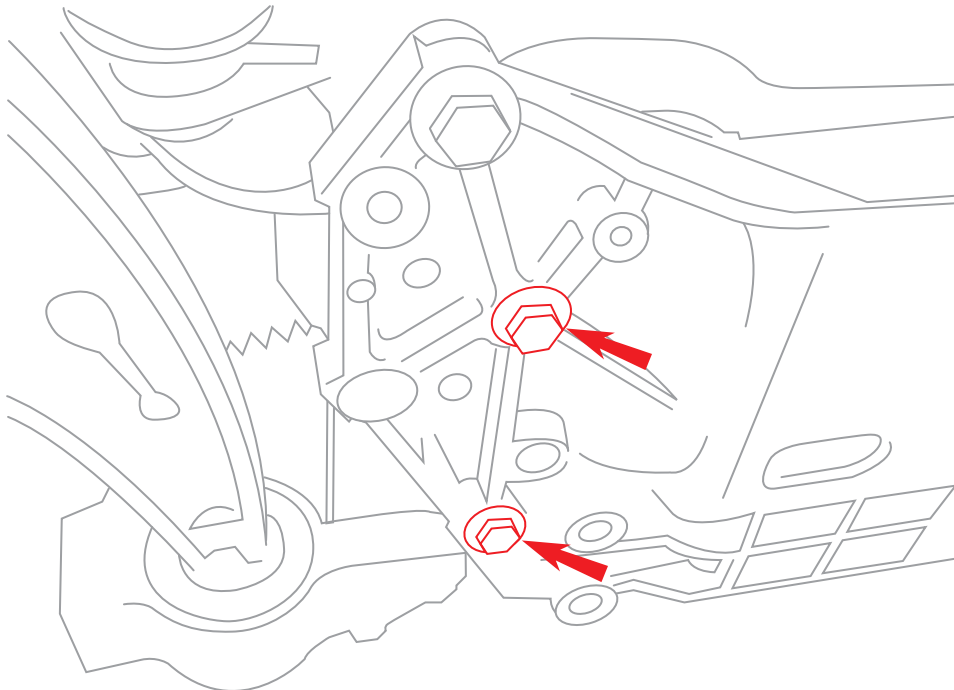
Unbolt the front exhaust hanger mount.

5 Disconnect Lower Engine Mount



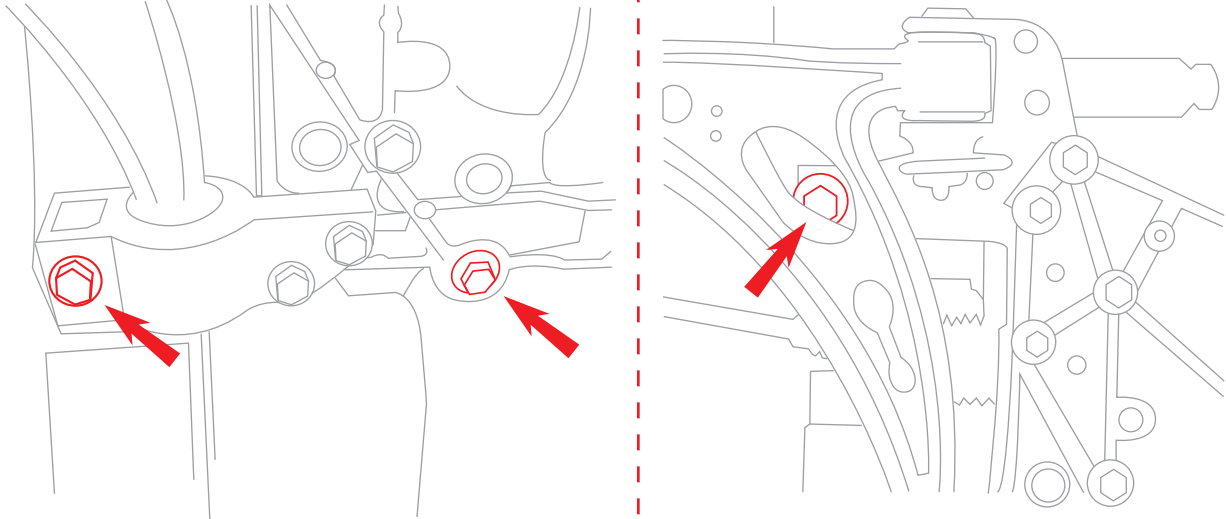
Locate and remove lower engine mount that attaches to the subframe.
Loosen and remove the bolt that attaches the mount to the engine.

6 Disconnect Steering Rack from Subframe



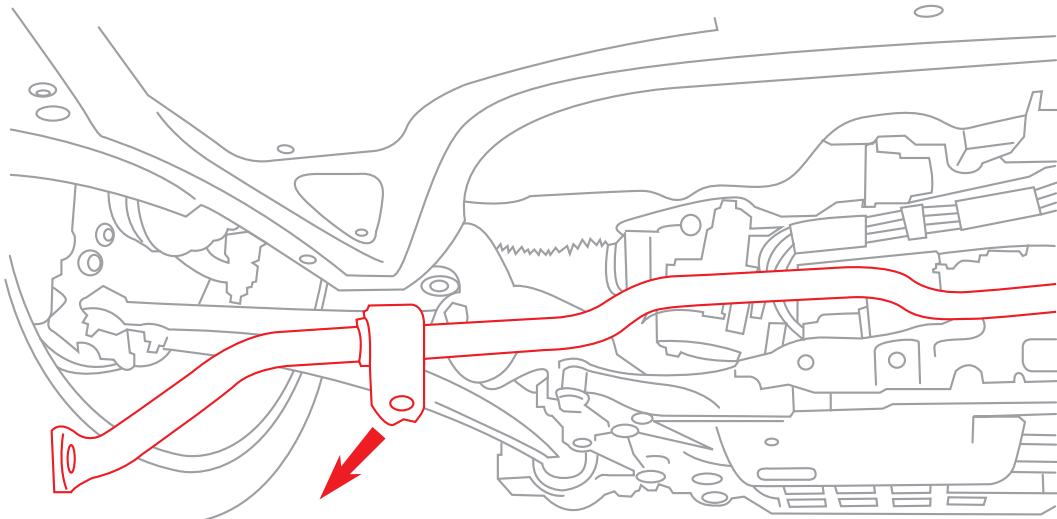
Loosen and remove the four steering rack bolts - (two per side).

7 Drop the Subframe Cradle



Loosen and remove the six subframe cradle bolts. The cradle will not drop completely since it is still connected to the struts, so you do not have to worry about it falling out. However, be careful when it drops down.

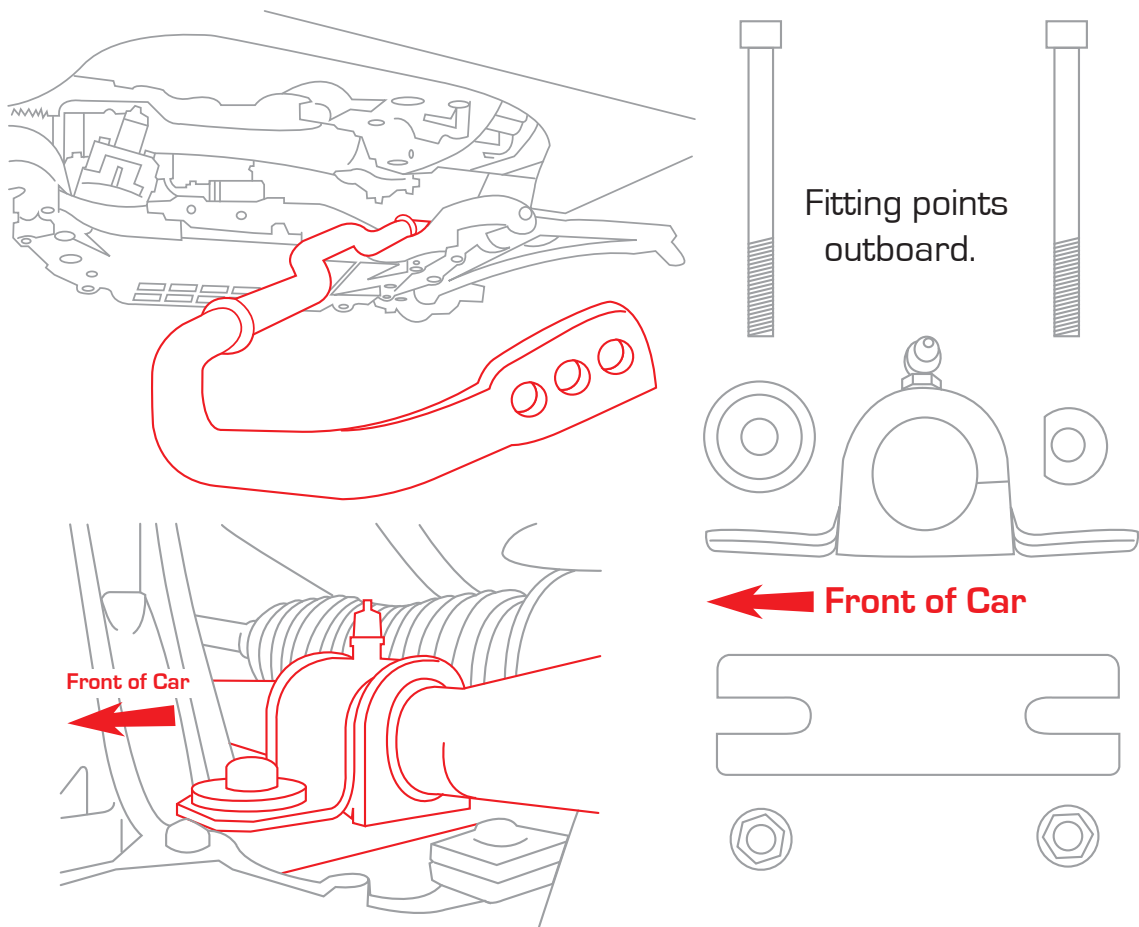
8 Remove the Front Sway Bar



It's a tight fit between the subframe and the body, so it will take some patience removing the sway bar. It also helps raising the front of the vehicle slightly to gain more clearance. The bar comes out towards the front of the car. Try to remember how the bar comes out, for this will be the same procedure getting the new APR sway bar in.

9 Reinstall New APR Sway Bar

Repeat steps in reverse order. Your new APR sway bar uses new bushings and brackets. The front bushing has a $\text{Ø}1\text{-}1/16$ " hole. Use the supplied silicon grease to lube the inside surface of the bushings. Make sure to use thread lock compound on the subframe bushing bracket bolts and the end link nuts. The bushing brackets are slotted, so make sure they are shifted towards the rear of the vehicle. Dish washer is used for the front bracket hole. When reinstalling the subframe you will need to use a jack and a pry bar to align the mounting holes. Once the holes are aligned, start all four subframe cradle bolts by hand to avoid cross threading. Make sure the steering column seal is popped back into position. Install the front end links onto the sway bar with the weight of the car on it's wheels. Do not install the end links while the suspension is in droop.



Your APR front bar has three adjustment holes, which allow the customer to change the sway bar stiffness harder or softer. The hole closest to the end is the softest setting, while the hole furthest from the end is the stiffest. The stiffness increase compared the stock bar is as follows:

Soft Setting:	45% Stiffer than Stock
Medium Setting:	70% Stiffer than Stock
Stiff Setting:	105% Stiffer than Stock